

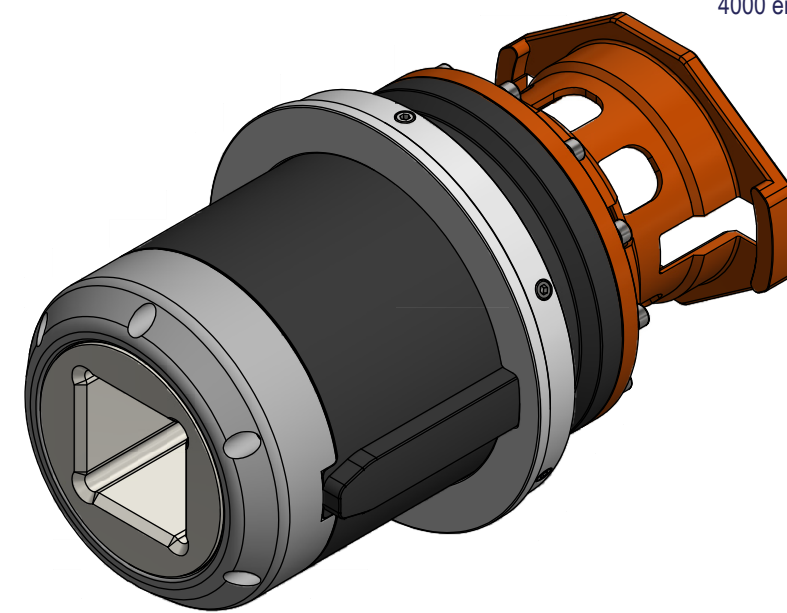
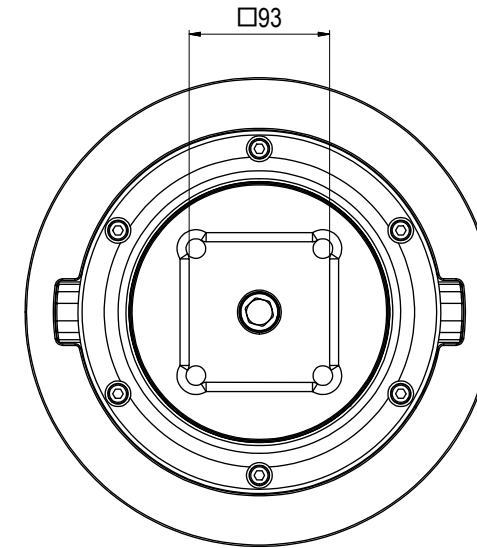
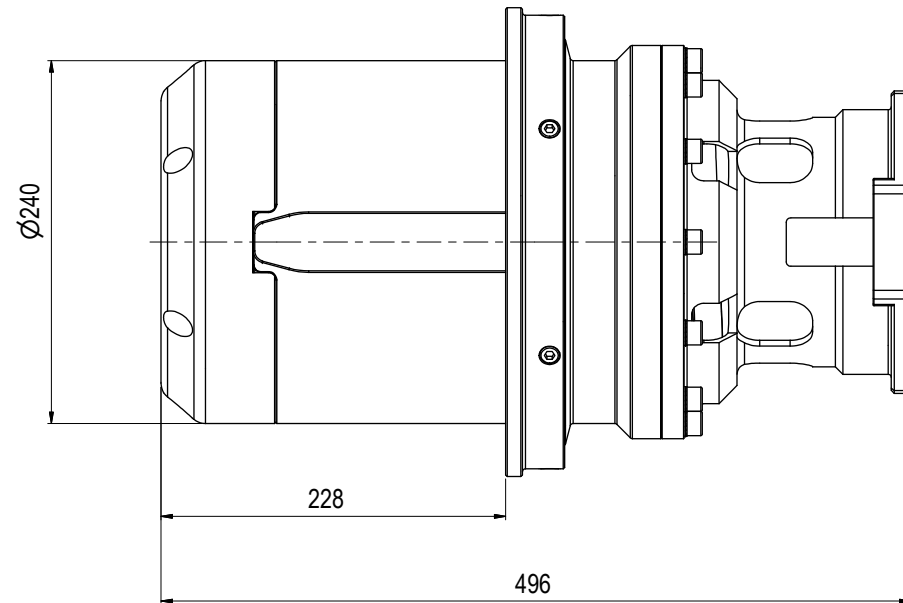
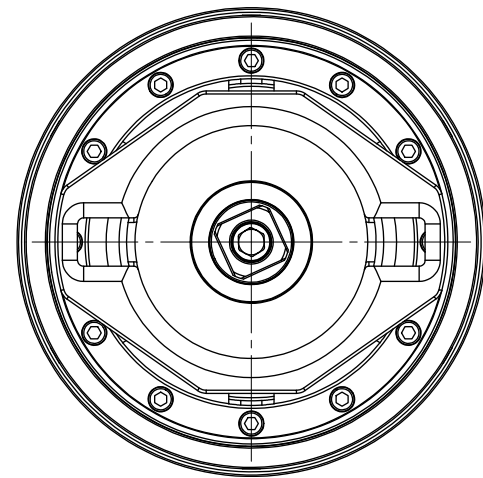
NOTE: 1  
 STANDARDS:  
 API 17D  
 Gear Design: ISO 6336

NOTE: 2  
 INTERFACE INFORMATION:  
 Hydraulic: N/A  
 Mechanical: Input API 17H CI 4 to output API 17D & AKSO CI 7 Short  
 Electrical: N/A  
 Data Com.: N/A

NOTE: 3  
 PROPERTIES:  
 Material Class: N/A  
 Temperature Class: N/A  
 Rated Work Press Bar: N/A  
 Test Pressure: N/A  
 Specification Level: N/A  
 Flow Rate: N/A  
 Qualification: API 17D Modified  
 Application: Long-term  
 Load Rating: N/A  
 Torque Rating: N/A  
 Design Water Depth: 3000m  
 Weight in Air: 89,1 kg  
 Volume: 13,67 dm<sup>3</sup>  
 Submerged Weight: 75,06 kg

NOTE: 4  
 ADDITIONAL INFORMATION:  
 Aker Solutions Class 7 Short version gearbox for Permanent use and installation subsea.  
 The gearbox is oil filled and pressure compensated using passive, integrated compensator. All seawater exposed parts fabricated in Super Duplex and Inconel 718, guide nose section in PEHD1000.  
 Gear Ratio 1:9,766 (optional alternative 1:9)  
 Other types of output interface available upon request.  
 Can be used on Long CI. 7 interface with pancake spacer

Qualification:  
 1000 endurance cycles @ 2700 Nm Input Torque  
 4000 endurance cycles @ 1800 Nm Input Torque



07	15.8.2025	9-IFU (Issued for Use)		WTJ	LGH	WTJ
06	28.1.2025	9-IFU (Issued for Use)		WTJ	AJE	WTJ
05	17.7.2024	7-IFC (Issued for Construction)		WTJ	TAN	WTJ
04	26.4.2023	7-IFC (Issued for Construction)		HNJ	LGH	HNJ
Rev.	Date	Reason for issue	Revision change	Made	Chk'd	Appr.



Dwg Scale:	NTS
Dwg Proj:	
Dwg Format:	A3

Drawing title:	Class 7 Gear Box Short 25kNm Long-term	
Drawing number:	BB8670	Rev: 07